

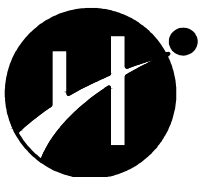
COTTAGE PROJECT

INDEX

- 100.01 - COVER PAGE & INDEX
- 101.01 - REFLECTED CEILING PLAN_ MAIN FLOOR
- 101.02 - REFLECTED CEILING PLAN_ BASEMENT
- 102.01 - POWER & DATA PLAN_ MAIN FLOOR
- 102.02 - POWER & DATA PLAN_ BASEMENT
- 103.01 - LIGHTING SCHEDULE
- 104.01 - POWER & DATA SCHEDULE

PRODUCED BY AN AUTODESK STUDENT VERSION

PRODUCED BY AN AUTODESK STUDENT VERSION



design at humber
 BID
 205 Humber College Blvd.
 Toronto, Ontario
 M9W 5L9

PROJECT: COTTAGE PROJECT

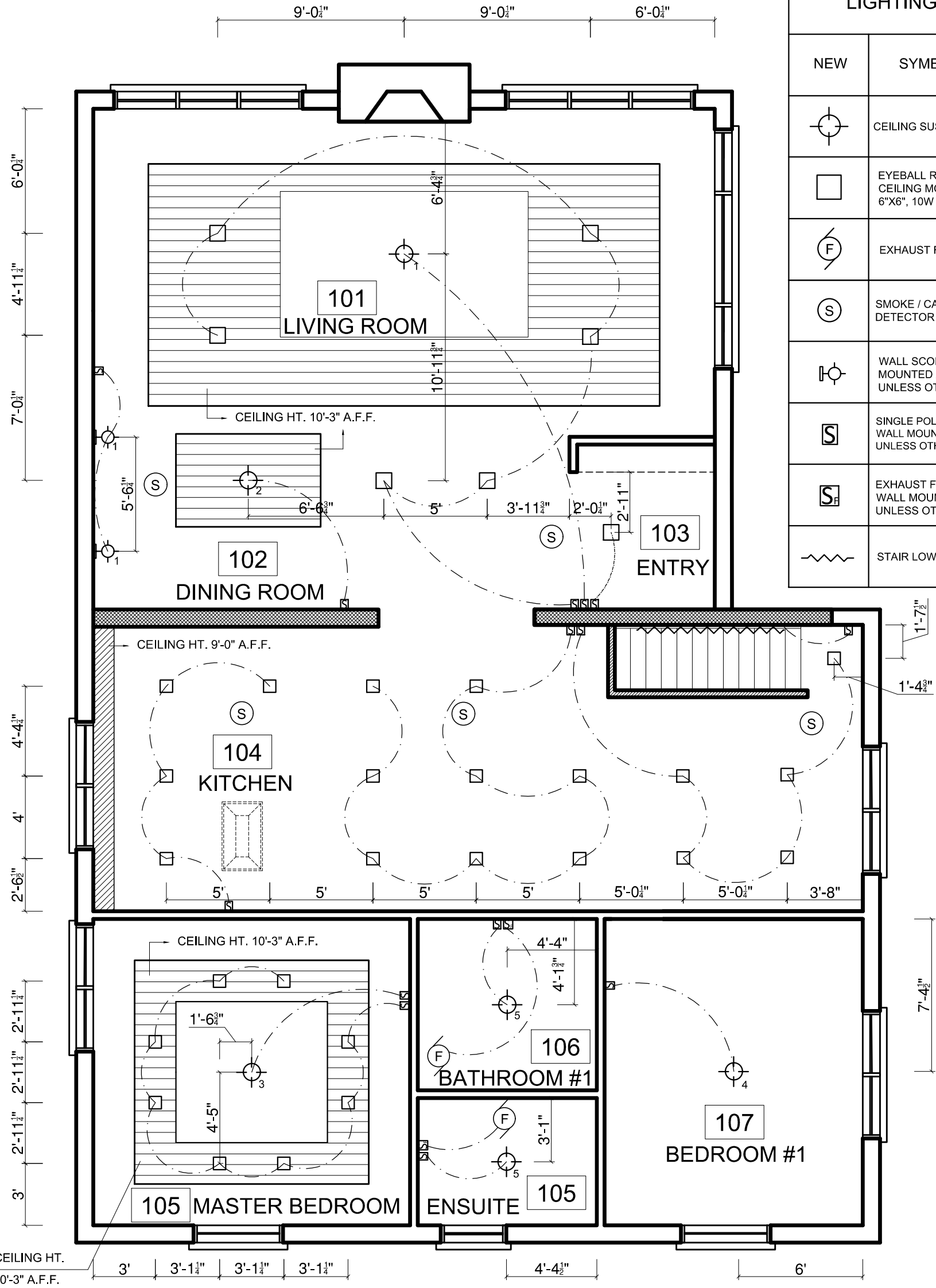
issued	description	date

STUDENT: YEJIN HWANG

DRAWING: COVER PAGE & INDEX

PAGE NO.
100.01 OF
 7 TOTAL

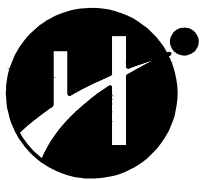
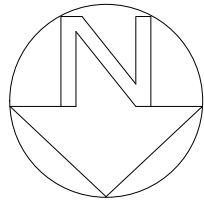
SCALE: DATE: APR. 21. 2020



LIGHTING LEGEND	
NEW	SYMBOL DESCRIPTION
	CEILING SUSPENDED LIGHT FIXTURE
	EYEBALL RECESSED CEILING MOUNTED, DOWN LIGHT, 6\"X6\", 10W LED
	EXHAUST FAN, 10\"X10"
	SMOKE / CARBON MONOXIDE DETECTOR
	WALL SCONCE MOUNTED AT 5'-6\" A.F.F. UNLESS OTHERWISE NOTED
	SINGLE POLE LIGHT SWITCH WALL MOUNTED / 42\" A.F.F. UNLESS OTHERWISE NOTED
	EXHAUST FAN SWITCH WALL MOUNTED / 42\" A.F.F. UNLESS OTHERWISE NOTED
	STAIR LOW LED LIGHT STRIP

NOTES:

1. CEILING HEIGHTS ARE ALL 10'-0" A.F.F. UNLESS OTHERWISE NOTED.
2. ALL EXPOSED DRYWALL CEILINGS, PAINTED, BENJAMIN MOORE PAINTS - SILVERY MOON (1604).
3. DRYWALL BULKHEAD CEILING, PAINTED, BENJAMIN MOORE PAINTS - SILVERY MOON (1604).



design at humber
 BID
 205 Humber College Blvd.
 Toronto, Ontario
 M9W 5L9

PROJECT: COTTAGE PROJECT

STUDENT: YEJIN HWANG

issued	description	date

DRAWING: MAINFLOOR RCP

SCALE: 3/16" = 1'-0" DATE: APR. 21, 2020

PAGE NO.

101.01 OF

7 TOTAL

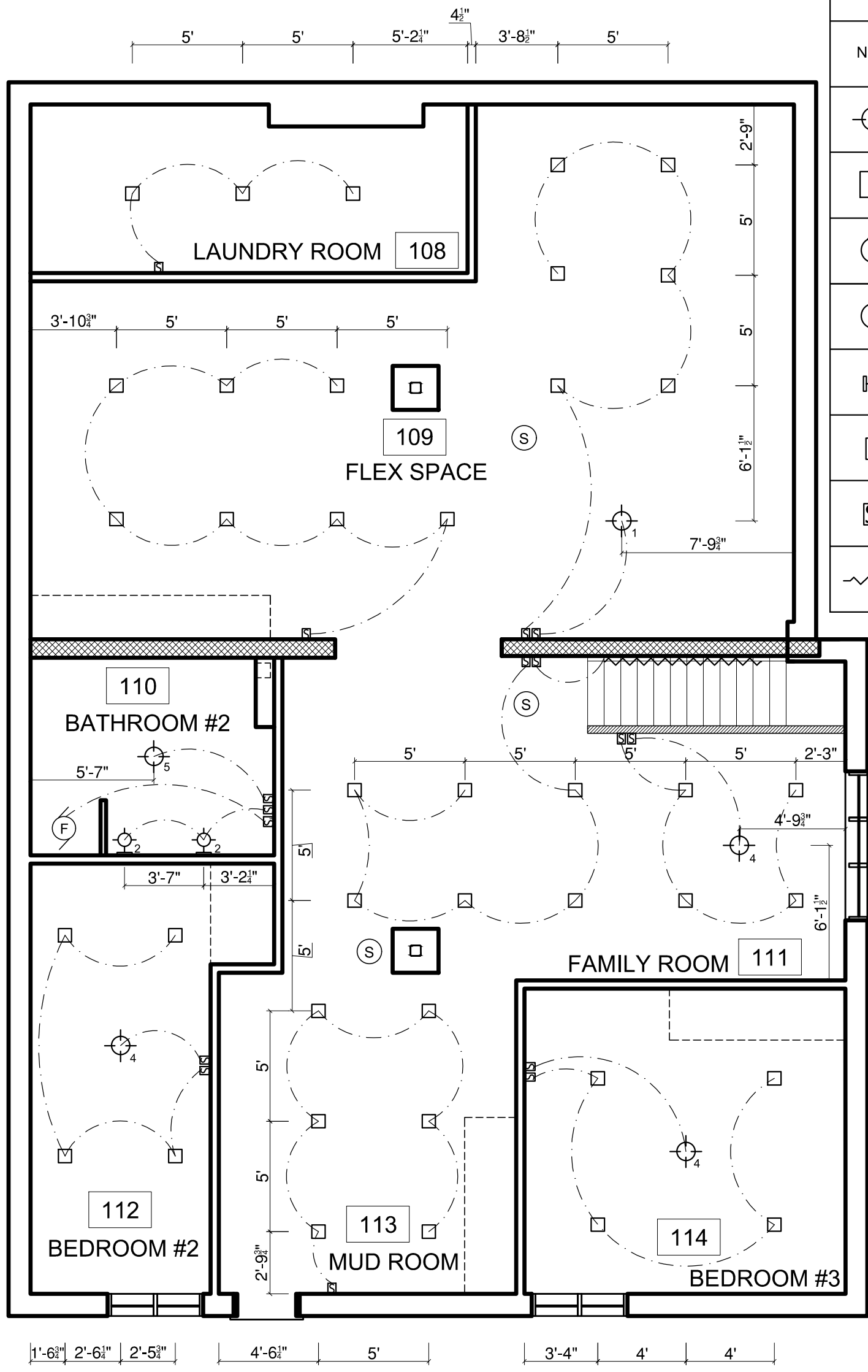
PRODUCED BY AN AUTODESK STUDENT VERSION

PRODUCED BY AN AUTODESK STUDENT VERSION

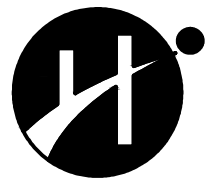
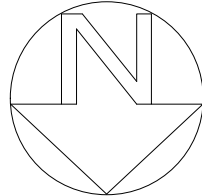
LIGHTING LEGEND	
NEW	SYMBOL DESCRIPTION
	CEILING SUSPENDED LIGHT FIXTURE
	EYEBALL RECESSED CEILING MOUNTED, DOWN LIGHT, 6"X6", 10W LED
	EXHAUST FAN, 10"X10"
	SMOKE / CARBON MONOXIDE DETECTOR
	WALL SCONCE MOUNTED AT 5'-6" A.F.F. UNLESS OTHERWISE NOTED
	SINGLE POLE LIGHT SWITCH WALL MOUNTED / 42" A.F.F. UNLESS OTHERWISE NOTED
	EXHAUST FAN SWITCH WALL MOUNTED / 42" A.F.F. UNLESS OTHERWISE NOTED
	STAIR LOW LED LIGHT STRIP

PRODUCED BY AN AUTODESK STUDENT VERSION

PRODUCED BY AN AUTODESK STUDENT VERSION



- NOTES:**
1. CEILING HEIGHTS ARE ALL 8'-0" A.F.F. UNLESS OTHERWISE NOTED.
 2. ALL EXPOSED DRYWALL CEILINGS, PAINTED, BENJAMIN MOORE PAINTS - SILVERLY MOON (1604).



design at humber
 BID
 205 Humber College Blvd.
 Toronto, Ontario
 M9W 5L9

issued	description	date

PROJECT: COTTAGE PROJECT

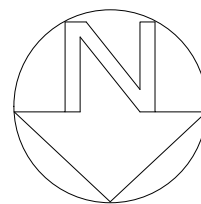
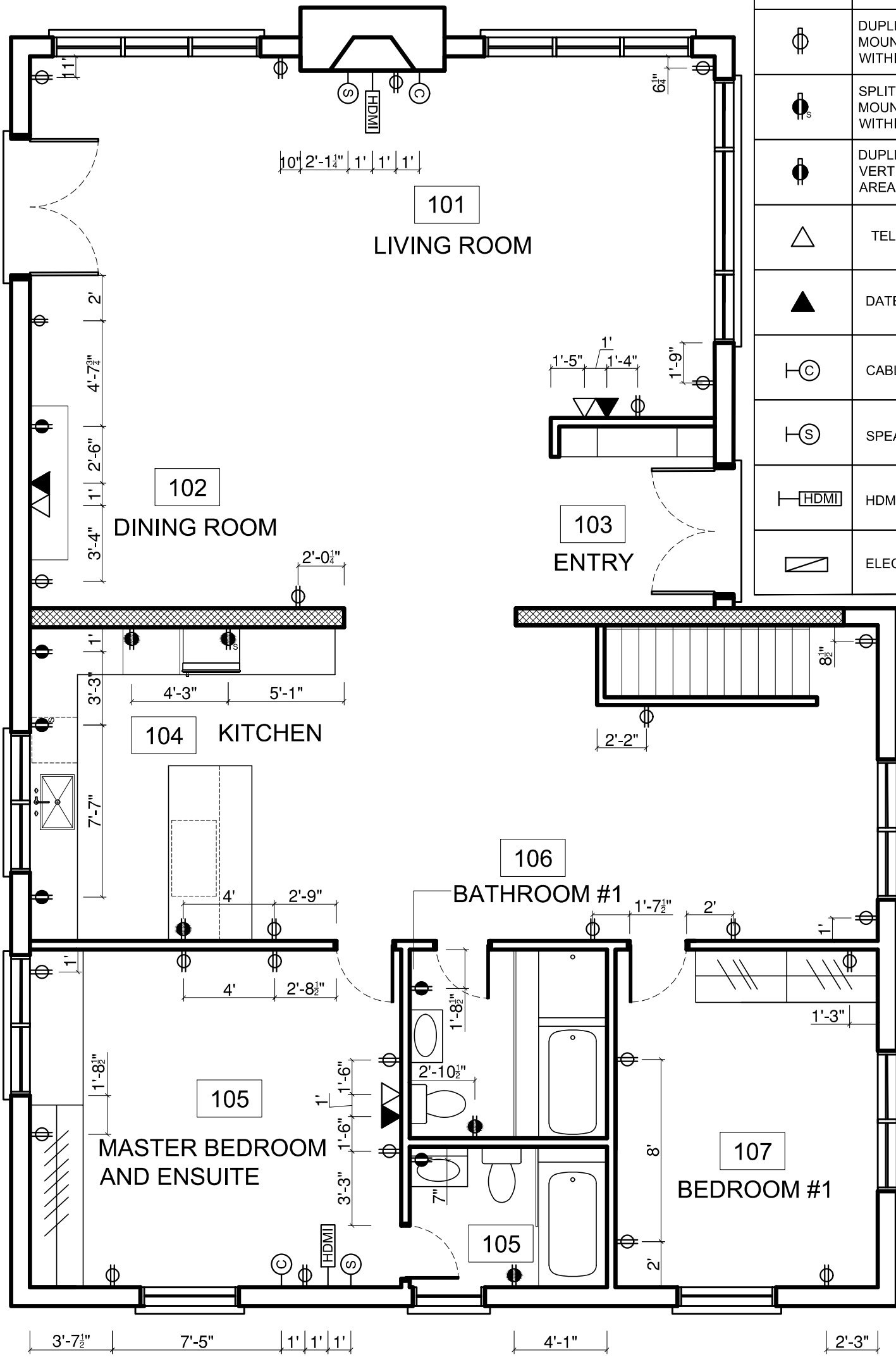
STUDENT: YEJIN HWANG

DRAWING: BASEMENT RCP

PAGE NO. 101.02 OF 7 TOTAL

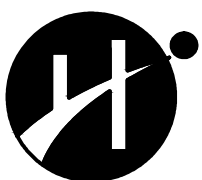
SCALE: 3/16" = 1'-0" DATE: APR. 21, 2020

ELECTRICAL LEGEND	
NEW	SYMBOL DESCRIPTION
	DUPLEX RECEPTACLE 120 V MOUNTED 2" A.F.F. (HORIZONTLY) WITHIN THE BASEBOARD
	SPLIT RECEPTACLE 120 V WALL MOUNTED 2" A.F.F. (HORIZONTALLY) WITHIN THE BASEBOARD
	DUPLEX RECEPTACLE 120 V MOUNTED VERTICALLY 48" A.F.F. IN KITCHEN / LAUNDRY AREAS, 42" A.F.F. IN ALL BATHROOMS
	TELEPHONE JACK, 12" A.F.F.
	DATE OUTLET, 12" A.F.F.
	CABLE OUTLET, 12" A.F.F.
	SPEAKER OUTLET, 12" A.F.F.
	HDMI OUTLET, 12" A.F.F.
	ELECTRICAL PANEL



PRODUCED BY AN AUTODESK STUDENT VERSION

PRODUCED BY AN AUTODESK STUDENT VERSION



design at humber
 BID
 205 Humber College Blvd.
 Toronto, Ontario
 M9W 5L9

PROJECT: COTTAGE PROJECT

STUDENT: YEJIN HWANG

issued	description	date

DRAWING: POWER & DATA PLAN PAGE NO.

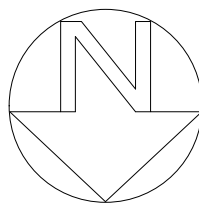
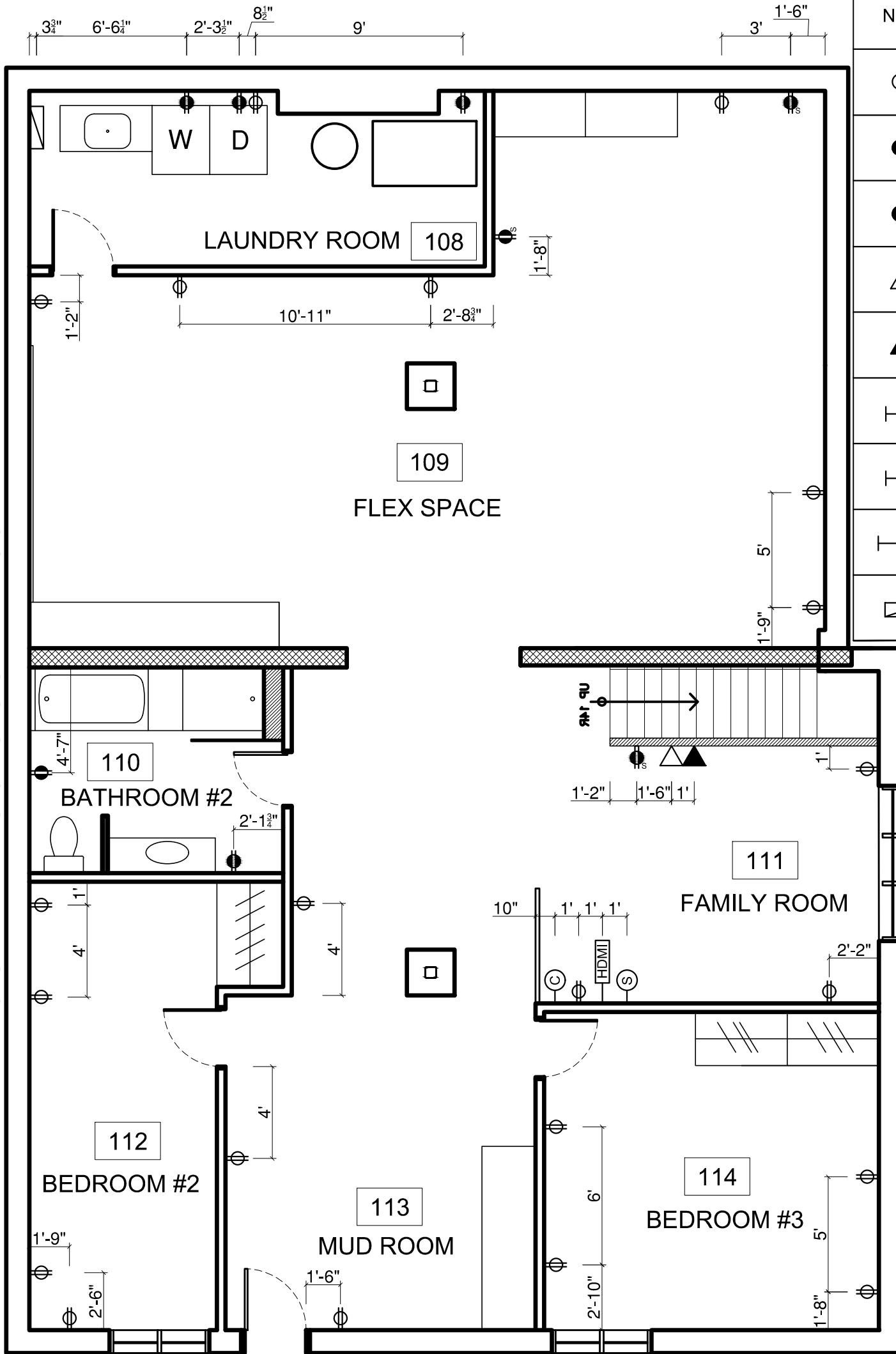
- MAINFLOOR

102.01 OF

SCALE: 3/16" = 1'-0" DATE: APR. 21. 2020

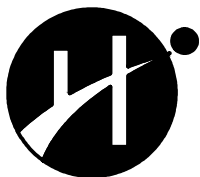
7 TOTAL

ELECTRICAL LEGEND	
NEW	SYMBOL DESCRIPTION
	DUPLEX RECEPTACLE 120 V MOUNTED 2" A.F.F. (HORIZONTLY) WITHIN THE BASEBOARD
	SPLIT RECEPTACLE 120 V WALL MOUNTED 2" A.F.F. (HORIZONTALLY) WITHIN THE BASEBOARD
	DUPLEX RECEPTACLE 120 V MOUNTED VERTICALLY 48" A.F.F. IN KITCHEN / LAUNDRY AREAS, 42" A.F.F. IN ALL BATHROOMS
	TELEPHONE JACK, 12" A.F.F.
	DATE OUTLET, 12" A.F.F.
	CABLE OUTLET, 12" A.F.F.
	SPEAKER OUTLET, 12" A.F.F.
	HDMI OUTLET, 12" A.F.F.
	ELECTRICAL PANEL



PRODUCED BY AN AUTODESK STUDENT VERSION

PRODUCED BY AN AUTODESK STUDENT VERSION



design at humber
 BID
 205 Humber College Blvd.
 Toronto, Ontario
 M9W 5L9

PROJECT: COTTAGE PROJECT

STUDENT: YEJIN HWANG

issued	description	date

DRAWING: POWER & DATA PLAN PAGE NO.

-BASEMENT

102.02 OF

SCALE: 3/16" = 1'-0" DATE: APR. 21. 2020

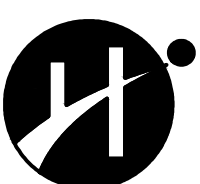
7 TOTAL

SYMBOL	DESCRIPTION	MANUFACTURER	MODEL NO. AND FINISH	HOUSING	LAMP TYPE	QUANT.	NOTES
	CHANDELIER LIGHT	HALO	NO. 1081633396700 / BRONZE	N/A	8-36W max. LED LAMP, 120V, WARM COLOR	2 PC.	TO BE INSTALLED IN THE LIVING ROOM
	PENDANT LIGHT	EUREKA LIGHTING	NO. 4428-10-RAP-7 / CHROME OR WHITE	N/A	SIX 40W INCANDESCENT BULBS or LED, 120V, WARM COLOR	1 PC.	TO BE INSTALLED IN THE DINING ROOM
	CHANDELIER LIGHT	EUREKA LIGHTING	NO. 44241-42-MCC-6 / CHROME PLATED	N/A	4W X 6, LED LAMP, 120V, WARM COLOR	1 PC.	TO BE INSTALLED IN THE MASTER BEDROOM
	SURFACE MOUNTED LIGHT	EUREKA LIGHTING	NO. 3600B. / METALLIC GRAY POLYESTER POWDER PAINT	N/A	24W X 2, LED LAMP, 120V, NEUTRAL	4 PC.	TO BE INSTALLED IN THE BEDROOMS AND FAMILY ROOM
	SURFACE MOUNTED LIGHT	EUREKA LIGHTING	NO. 3202C / WHITE GLASS	N/A	24W, LED LAMP, 120V, NEUTRAL	3 PC.	TO BE INSTALLED IN THE LIVING ROOM
	CEILING MOUNTED EYEBALL RECESSED DOWN LIGHT	EUREKA LIGHTING	NO. 12540-1X1 / BLACK BRASS	1604-9.35.11.DP NEW INSTALLATION	11W, LED LAMP, 120V, WARM COLOR	13 SETS	TO BE INSTALLED IN ALL RECESSED LIGHTS
	WALL SCONCE	EUREKA LIGHTING	NO. 2033B / CHROME PLATED	N/A	8W, LED LAMP, 120V, WARM COLOR	1 SET	TO BE INSTALLED IN THE DINING ROOM
	WALL SCONCE	EUREKA LIGHTING	NO. 2036B / CHROME PLATED	N/A	4W, LED LAMP, 120V, WARM COLOR	1 SET	TO BE INSTALLED IN THE BATHROOM#2
	WALL MOUNTED SINGLE POLE LIGHT SWITCH 42" A.F.F. UNLESS OTHERWISE NOTED	SUN VALLEY BRONZE	SINGLE DECORA SWITCH PLATE, NO.EC-9301/BRONZE	N/A	N/A	28 PC.	TO BE INSTALLED IN ALL ROOMS EXCEPT BATHROOM
	WALL MOUNTED EXHAUST FAN SWITCH 42" A.F.F. UNLESS OTHERWISE NOTED	SUN VALLEY BRONZE	SINGLE DECORA SWITCH PLATE, NO.EC-9301/BRONZE	N/A	N/A	3 PC.	TO BE INSTALLED IN ALL BATHROOMS
	STAIR LOW VOLTAGE LED LIGHT STRIP	IKEA LIGHTING	NO. 402.957.26, OMLOPP LIGHT/WHITE	502.883.39 ANSLUTA TRANSFORMER, 30W	BUILT - IN LED LAMP, WARM COLOR	1 PC.	TO BE INSTALLED UNDER STAIR RAILING

PRODUCED BY AN AUTODESK STUDENT VERSION

PRODUCED BY AN AUTODESK STUDENT VERSION

SYMBOL	DESCRIPTION	MANUFACTURER	MODEL NO. AND FINISH	QUANT.	NOTES
	DUPLEX RECEPTACLE 120 V / 4-1/2" X 4-1/2"	SUN VALLEY BRONZE	DUPLEX DECORA OUTLET, NO. EC-302 / BRONZE	48 PC.	TO BE INSTALLED IN OVER HOUSE UNLESS OTHERWISE NOTED.
	DUPLEX RECEPTACLE 120 V / 4-1/2" X 4-1/2"	SUN VALLEY BRONZE	DUPLEX DECORA OUTLET, NO. EC-302 / BRONZE	5 PC.	TO BE INSTALLED IN OVER HOUSE WALL MOUNTED 2" A.F.F. (HORIZONTALLY) WITHIN THE BASEBOARD
	DUPLEX RECEPTACLE 120 V / 4-1/2" X 4-1/2"	SUN VALLEY BRONZE	DUPLEX DECORA OUTLET, NO. EC-302 / BRONZE	14 PC.	MOUNTED VERTICALLY 48" A.F.F. IN THE KITCHEN, LAUNDRY AREA, BATHROOMS
	TELEPHONE JACK, 2-3/4" X 4-1/2"	SUN VALLEY BRONZE	SINGLE DECORA OUTLET, NO. EC-301 / BRONZE	4 PC.	TO BE INSTALLED IN THE LIVING ROOM, DINING ROOM, MASTER BEDROOM, AND FAMILY ROOM
	DATE OUTLET, 2-3/4" X 4-1/2"	SUN VALLEY BRONZE	SINGLE DECORA OUTLET, NO. EC-301 / BRONZE	4 PC.	TO BE INSTALLED IN THE LIVING ROOM, DINING ROOM, MASTER BEDROOM, AND FAMILY ROOM
	CABLE OUTLET, 2-3/4" X 4-1/2"	SUN VALLEY BRONZE	SINGLE DECORA OUTLET, NO. EC-301 / BRONZE	3 PC.	TO BE INSTALLED IN THE LIVING ROOM, MASTER BEDROOM, AND FAMILY ROOM
	SPEAKER OUTLET, 2-3/4" X 4-1/2"	SUN VALLEY BRONZE	SINGLE DECORA OUTLET, NO. EC-301 / BRONZE	3 PC.	TO BE INSTALLED IN THE LIVING ROOM, MASTER BEDROOM, AND FAMILY ROOM
	HDMI OUTLET, 2-3/4" X 4-1/2"	SUN VALLEY BRONZE	SINGLE DECORA OUTLET, NO. EC-301 / BRONZE	3 PC.	TO BE INSTALLED IN THE LIVING ROOM, MASTER BEDROOM, AND FAMILY ROOM



issued	description	date